

Ripetitore Segnale Radio RF Repeater

Estende la portata degli
accessori



be smart, be wireless

Manuale d'uso

Codice 559593037

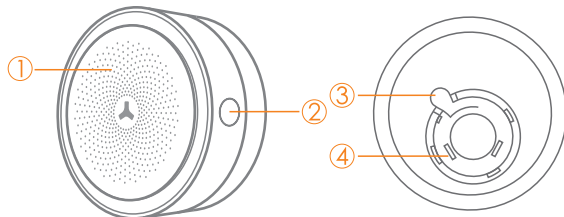
Descrizione

Hom-omni-EXT è un ripetitore wireless che estende la portata di dispositivi RF. Ha un design elegante e facile da installare. Elimina la necessità di eseguire l'aggiornamento a un pannello di controllo degli allarmi più ampio che supporta due ricevitori. Si tratta di un accessorio con buona stabilità, alta sensibilità di ricezione, maggiore distanza di trasmissione e anti-interferenza. I plug sostituibili sono flessibili per soddisfare le esigenze dei diversi clienti.

Caratteristiche

Estende la gamma di dispositivi wireless
Riceve messaggi di allarme, di stato e di controllo dagli accessori e ripete questi messaggi sul pannello di controllo. I 3 colori diversi indicano lo stato corrente dell'allarme per l'inserimento / disinserimento ...
Un solo tocco per accendere / spegnere l'indicatore LED
Spina sostituibile, più flessibile da cambiare
Batteria di backup 12 ore in caso di interruzione dell'alimentazione

Vista generale / indicazione LED



1. Indicatore LED
LED rosso lampeggia una volta: registrazione
LED verde acceso: sistema disinserito
LED verde lampeggia una volta: trasmissione del segnale wireless
LED blu acceso: sistema inserito in modalità totale.
LED blu lampeggia: il sistema è inserito in modalità parziale.
2. Pulsante Registrazione / Test
3. Spina
4. Spine intercambiabili

Specifiche

Tensione: DC100-240V 50 / 60HZ
Corrente massima: 20 mA / 220 V
Potenza nominale: ≤5 W (220 V)
Batteria di riserva: 3,7 V / 600 mA
Distanza di ricezione: ≤100m
Distanza di trasmissione: 500 M
Materiale involucro: plastica ABS
Presa Tipo: EU / US / UK / AU
Condizione di funzionamento: -10 ° C ~ 55 ° C
Dimensioni: Ø80 x 41,7 mm

Button Operation

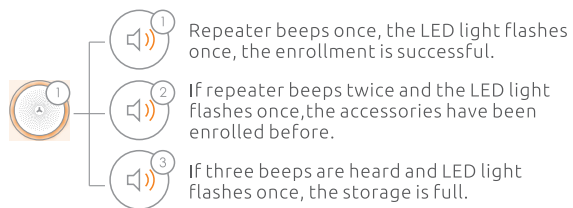
Function	Opcration	Status
Turn On Repeater	Press Enroll Button for 3 seconds	The repeater beeps once, the LED indicator light up in green color.
Turn Off Repeater	Press Enroll Button for 10 times	The repeater beeps once, the LED indicator blacks out.
Turn On/OFF LED Indicator	Press Enroll Button for 5 times	The repeater beeps once, the LED indicator blacks out or light up.
Enters into Enroll State	Press Enroll Button once	The repeater beeps once, LED indicator light up in red.
Delete Enrolled Wireless Accessories	Press Enroll Button for 5 seconds	The repeater beeps once.
Turn On/Off Siren Sound	Press Enroll Button 3 times	The repeater beeps once, the LED indicator blacks out or light up.

Enrollment

1. Press the enroll button of RF repeater, one beep is heard and the LED lights up in red to enter into enrolling status (Press again the Enroll Button within 30 seconds to exit enrolling state.)

2. Enroll the alarm control panel by triggering its enroll button or tamper switch.

Enroll the accessories by triggering, for example, pressing any button of remote control, depart the transmitter and magnet of door sensor etc.



Note: Accessories which already connected with control panel also need to pair with repeater.

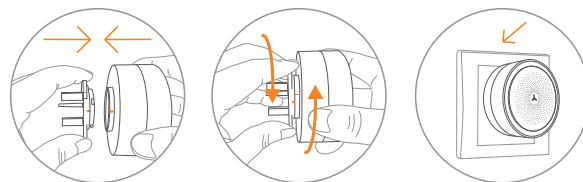
Delete Enrolled Wireless Accessories

Press and hold the enroll button for 5 seconds until one beep is heard. All enrolled wireless accessories will be deleted.



Installation

Fix the the plug on detector properly by rotating. And then power it on.



Notice:

1. The back-up battery only for emergency use, AC power should be the main supply.
2. Do not hit or drop the repeater in case of damage component inside.
3. The strobe siren should be tested regularly, so that all fault can be fixed in time.
4. Do not install the device lower than 1.2 m .
5. Each accessory and the control panel can not be too close, otherwise it will effect the transmitting.

Disposal of the unit

Under the European Directive 2012/19 / UE, the presence of the RAEE (crossed out bin) mark indicates that: This appliance is not to be considered as urban waste: its disposal must therefore be carried out by separate collection. To prevent possible harm to the environment or human health from uncontrolled waste disposal, recycle it responsibly to promote the sustainable reuse of material resources. To return your used device, please use the return and collection systems or contact the retailer where the product was purchased. They can take this product for environmental safe recycling.

Synthetic declaration of CE conformity

The manufacturer, Melchioni Spa, declares that this radio equipment complies with the 2014/53 / EU directive. The full text of the EU declaration of conformity is available at the following Internet address: www.melchioni.it